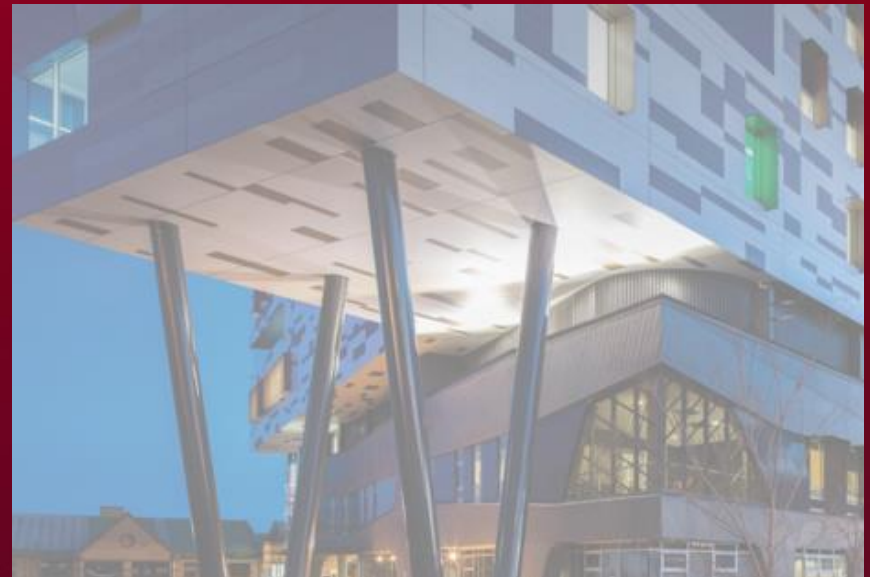


Regional Health Infrastructure Fund (RHIF) 2022-23

Webinar Information Session for
Victorian Health Services



RHIF history of funding - 499 projects,185 remain in progress



Projects Funded

Funding Round	Fund Value	No. of Application	No. of Projects Funded	Completion Rate
2016-17	\$135m	198	92	92%
2017-18	\$65m	233	80	85%
2018-19	\$50m	169	112	75%
2019-20	\$100m	189	96	65%
2020-21	\$120m	154	108	15%
2021-22	\$20m	Direct allocation	11	-
Total	\$490m	943	499	63%

Future funding - ongoing commitment to provide funding to improve hospital infrastructure and services

New programs announced in the 2022 budget – Total Funds - \$300m (4 years)



“Multi-year Program
New bid-based submissions
and prioritisation

Key Objectives of RHIF 2022-23

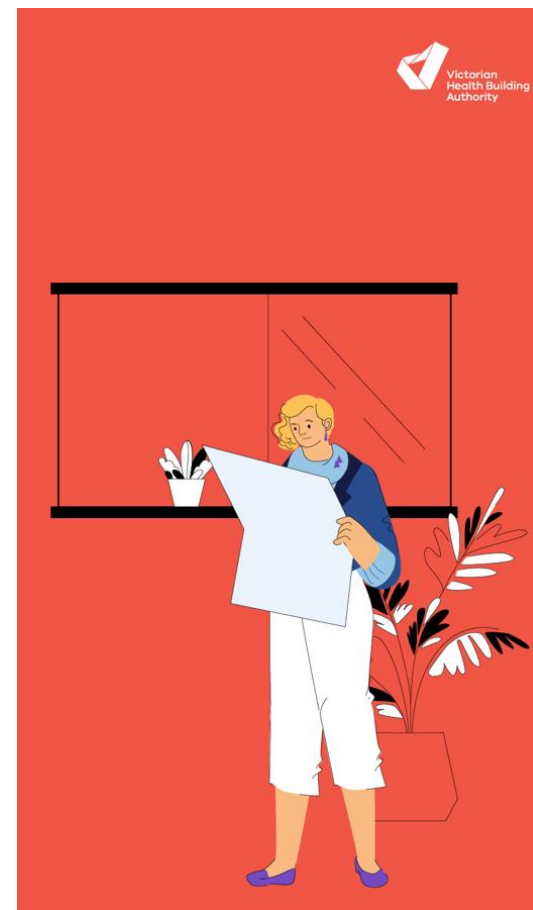
- Mitigate infrastructure risk, patient safety, healthcare worker safety, service continuity
- Enhance service capacity, support contemporary models of care and improve patient and staff amenity
- Sustain and improve infrastructure assets
- Stronger role for outer regional services
- Improve patient experience & quality of care
- Increase system efficiency
- Improve workforce experience and safety
- Strengthen regional communities and economies

Eligible Health Services

Funding is available to eligible Health Services including:

- Victorian public regional and sub-regional health services
- Local and small rural health services
- Multipurpose services
- Public residential aged care services
- Registered community health services
- Bush nursing hospitals and Centres
- Women's health services
- Aboriginal Community Controlled Health Organisations, and
- Publicly funded community specialist palliative care services.

A detailed list of eligible agencies is available in the RHIF 2022-23 Guidelines.



Eligible projects

Funds are available for:

- Construction: minor infrastructure replacement, reconfiguration and refurbishment projects to address aged building fabric, compliance and demand issues
- Non construction: equipment (standalone furniture, fittings, medical equipment, engineering infrastructure and plant)
- Information and communications technology
- New technologies including systems to reduce usage and increase efficiencies of power and / or water
- Compliance related capital and /or upgrade works (e.g., AS4187 including pandemic improvement / readiness, fire, and life safety works) and
- Motor vehicles – eligibility restricted to bush nursing centres only.

Ineligible and excluded items

- Operational funding
- Routine maintenance
- Fixtures, fittings and furniture not associated with a refurbishment project.
- Motor vehicles (eligibility restricted to bush nursing centres only).

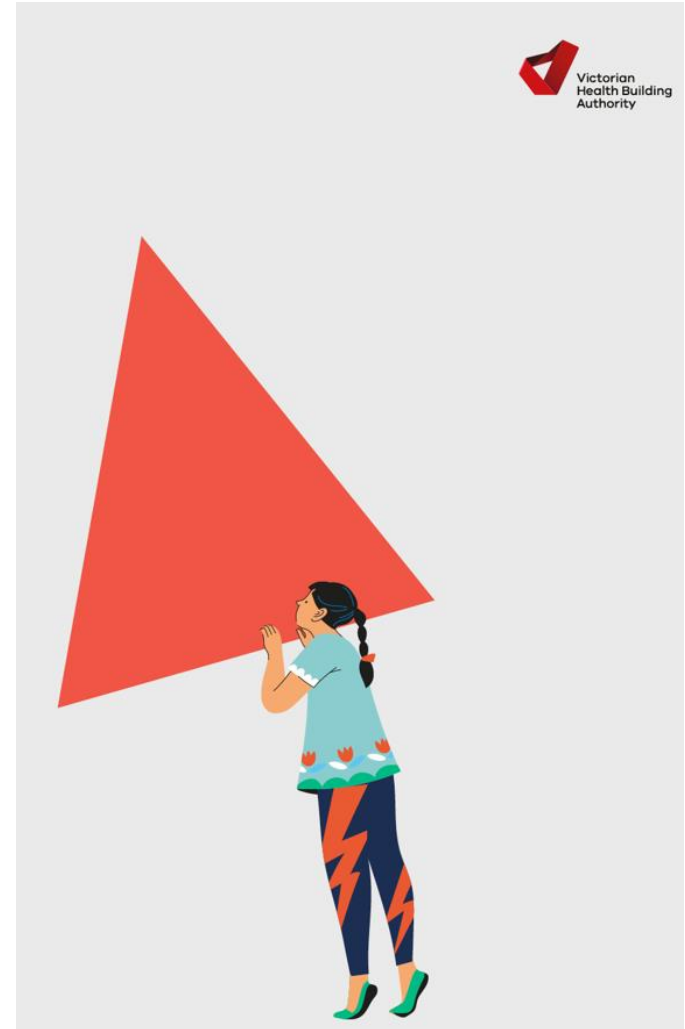
Applicants may be ineligible for funding where they have received funding under previous RHIF rounds and where they:

- failed to commence their project within two years of receipt of funds,
- failed to complete one or more projects to scope and timeframe, or
- failed to fully comply with conditions of funding (for example, submission of progress reports, acquittals, unapproved change of scope).

RHIF Guidelines - What's new and important

Maximise opportunity for funding

- Stream Funding
- Sustainability
- New application form



Stream Funding

A major change in 2022 is the consideration of funding for two types of projects, categorised as Ready for Implementation (Stream 1) as well as projects still in Planning or Design Development (Stream 2).

Health Services will be asked to nominate which Stream the project falls into according to readiness:

Stream 1 – Projects Ready for Implementation

- Submission ready to be considered for full funding
- Designs and / or specifications substantially complete
- Detailed design accompanied by a detailed cost plan
- Regulatory approvals in place
- Ready to invite market tenders for construction / delivery quotations

Stream Funding (cont.)

Stream 2 – Planning or Design development Projects

Funding will be provided to advance projects to the next stage of readiness (seed funding).

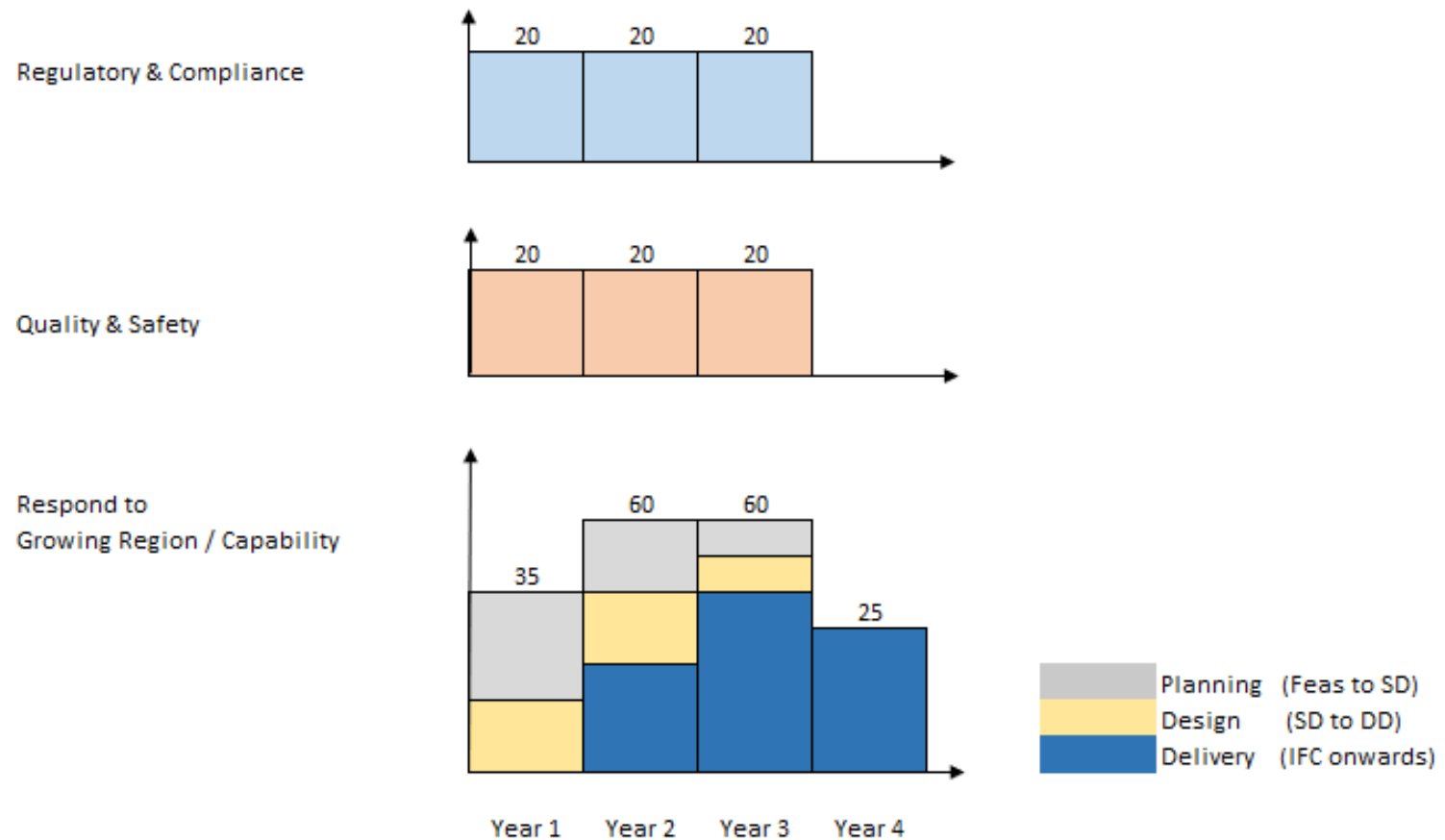
Projects can be funded for planning, design refinement or further technical work, to improve the site understanding and refine the accuracies of cost estimates before formal commitment to funding is provided.

This Stream also allows for ongoing consultation with VHBA and Regional CSI representatives to gain for full support for a refined proposal.

VHBA will fully consider all submissions in each Stream for potential funding.

Any application successful for funding under Stream 2 is not automatically guaranteed to receive funding in subsequent rounds. Stream 2 projects will be required to demonstrate progress and will be eligible to be submitted for continuation of funding in successive annual funding applications.

RHIF 2022-23 - Notional Cash Flow



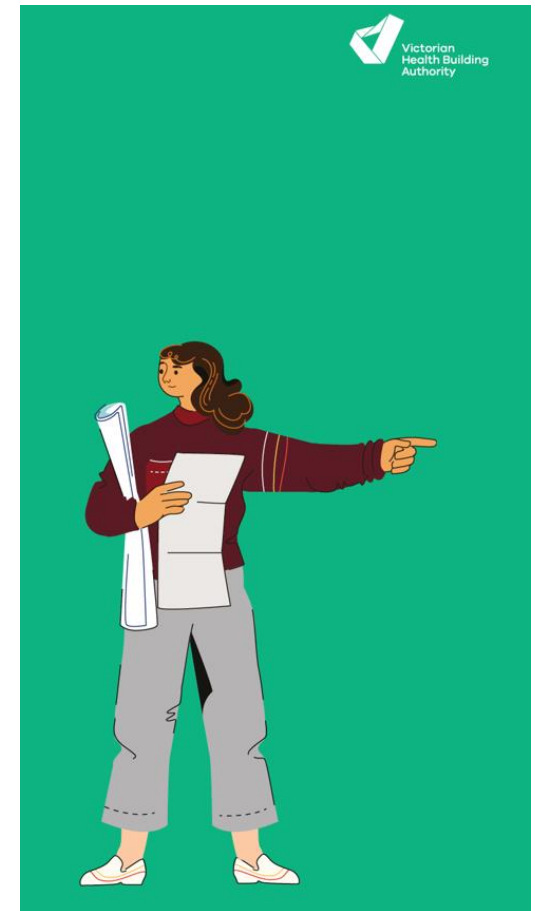
Sustainability

Must address minimum sustainability requirements and opportunities to support enhanced initiatives.

Health services to complete a sustainability business-as-usual checklist and include in their SmartyGrants applications to show compliance with minimum requirements

Construction projects over \$5m to include a budget of 2.5 per cent of total construction cost for enhanced sustainability initiatives in their cost plan

Health services may be eligible to access up to 2.5 per cent of total construction cost for enhanced sustainability initiatives for projects up to \$5m, where the project demonstrates the benefit of additional investment.



Application Process - SmartyGrants

The screenshot shows the top navigation bar with the VHBA logo and 'Not logged in. Log in' link. The main heading is 'RHIF 2022-23'. Below it are three buttons: 'Start a submission', 'Preview the form', and 'Download preview form'. A notice states: 'Submissions are now being accepted. Submissions close at 5:00PM 22 July 2022 (AEST)'. An important note says: 'IMPORTANT: Please read information below to assist you in completing your application online.' Under the heading 'BEFORE YOU BEGIN', there is a welcome message, a link to the online grant application service, and instructions on how to get help or download the help guide.

This section is titled 'Health Service / Agency Details'. It contains two required fields, marked with an asterisk (*): 'Applicant Organisation name' and 'Applicant Organisation ABN'. Below the first field is a dropdown menu with the instruction 'Select your Organisation name from the dropdown list'. Below the second field is a text box with the instruction 'The ABN provided will be used to look up the following information. Click Lookup above to check that you have entered the ABN correctly.' To the right of the text box is a 'Lookup' button. Below the text box is a table with the following information:

Information from the Australian Business Register
ABN
Entity name
ABN status
Entity type
Goods & Services Tax (GST)
DGR Endorsed

- Applications can only be submitted via SmartyGrants. When you choose 'Start a Submission', you will be requested to log in. Your application will generate a reference number for the application in SmartyGrants. Please use this reference number when emailing any questions to the Grants Team.
- You can work on your answers in a Word document, then copy and paste into the application form. It is recommended to save as you navigate through the form.
- Please note – The “SUBMIT” button must have been pushed prior 5pm 22 July 2022. VHBA cannot view unsubmitted applications.

Application Form Overview

- Health Service details and contact details for person completing the form
- Grant History for previous years
- Project description (25MB attachment limit)
- Nominate Priority 1 or 2
- Nominate Category:
 - 1. Regulatory and Compliance,
 - 2. Quality and Safety or
 - 3. Respond to Growing Demand.
- Complete and attach Sustainability questionnaire ***NEW***
- Confirm Regional Division support ***NEW***
- Nominate:
 - Stream 1 Project – Ready for Implementation or
 - Stream 2 – Planning or Design Development. ***NEW***
- Cost and Contingency questions ***more detail this year***
- Responses to Evaluation Criteria
- CEO sign off

Lessons Learned - Cost Contingency and Timeframes

Cost

- Independent quantity Surveyor estimates preferred
- All infrastructure connection and interface costs included
- Include:
 - Decanting of patient's staff and equipment
 - Staging requirements and Operational impacts
 - Temporary facilities

Contingencies

- Make allowance for design, construction and cost escalation

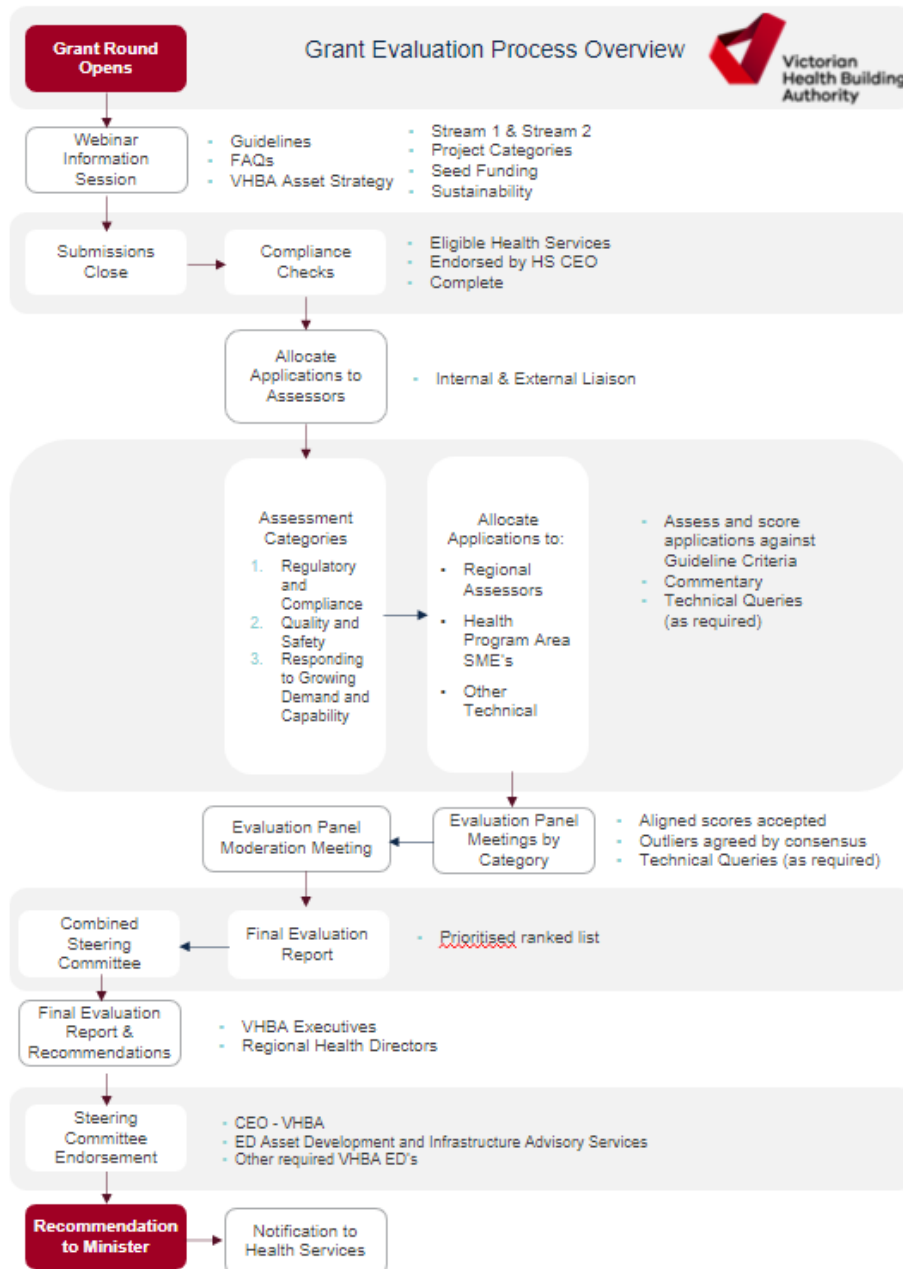
Programme (time schedule)

- Programme summaries need to align with VHBA payment milestones



Key Application Requirements

- Proposal description and deliverables are clearly defined
- Sustainability checklist completed
- Regional Division support is secured
- Cost information is sufficiently detailed (according to Stream 1 or Stream 2 scope)
- Proposal details all direct and indirect costs (to avoid change requests and cost overruns)
- Contingencies clearly detailed
- High quality risk management - identification and mitigation actions
- Project budget includes operating funding and resources required (viability cannot be dependent on continuing or recurrent State Government funding)
- Strong responses to weighted Evaluation Criteria



Evaluation process

The assessment process will involve various reviews and technical input including:

- Proactive engagement with Health Services (Regional Division CSI team) including acceptance of capability and service model
- SME review and assessment for speciality clinical and technical areas
- VHBA RHIF Project Working Group will manage technical queries and clarifications throughout assessment period

Evaluation Criteria and Scoring

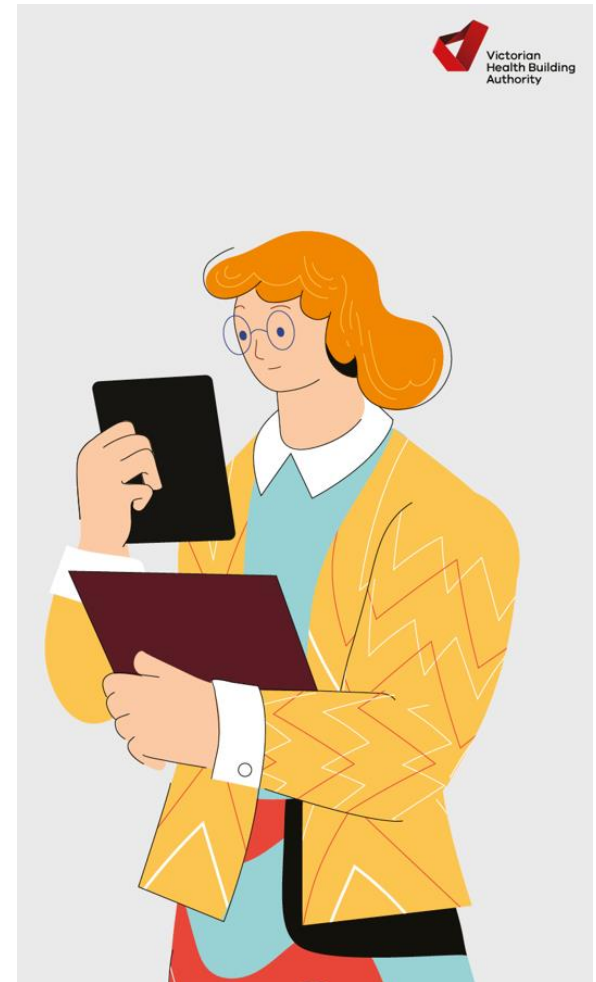
Criteria	Score Description	Scoring	Weighting
1	Improved patient experience and quality of care	Score between 1 and 10	40%
2	Increased system efficiency	Score between 1 and 10	35%
3	Improved workforce experience and safety	Score between 1 and 10	10%
4	Improved regional communities and economies	Score between 1 and 10	15%
5	Project risks, mitigations and dependencies	Project delivery to be assessed as ready, partially ready, not ready	RAG
6	Governance and project oversight	Project Governance will be assessed as strong, good or inadequate	RAG

Key dates and areas of focus

Milestone	Target Date
Grant Round Opens	17 June 2022
Briefing to Health Services (online)	1 July 2022
Deadline to upload applications	22 July 2022
VHBA evaluates and clarifies applications with Health Services	25 July 2022
Announcement of successful funding (following Ministerial approval)	Late September 2022

Successful Applications

- Letters will be sent to successful Health Services following Ministerial approval (anticipated by October 2022), including a Letter of Agreement requiring Health Service response to accepting the funding and providing an estimate of project milestones.
- Unsuccessful bids will be notified and debrief offered.
- Health Services manage the project according to the Agreement, with VHBA monitoring scope, time and budget.
- Health Services will need to complete each phase and milestone as per the Letter of Agreement or Funding Deed (depending on the size of the project)



Resources and Application Assistance Details

RHIF Funding Guidelines

<https://www.vhba.vic.gov.au/health/regional-facilities/regional-health-infrastructure-fund>

Technical Questions (during the submission period)

RHIF.Applications@health.vic.gov.au

RHIF Application Form Queries (or Guidelines), please email the Grants team
RHIF.Applications@health.vic.gov.au

SmartyGrants, please email the customer support team:

- service@smarty.grants.com.au or call (03) 9320 6888
- [SmartyGrants Help Guide](#)
- <http://applicanthelp.smartygrants.com.au/help-guide-for-applicants/>

Sustainability Checklist & FAQ

[RHIF-2022-23-Sustainability-Checklist-for-Grants-Programs.pdf \(vhba.vic.gov.au\)](#)

www.vhba.vic.gov.au/resources/environmental-sustainability

Questions?

Questions will be taken through the Q&A chat and responded to as long as time permits.

Answers will be added to the end of this presentation and posted on the RHIF web-page along with a recording of this webinar.



Thank you

This presentation will be uploaded to the VHBA RHIF webpage (google 'RHIF Funding')

<https://www.vhba.vic.gov.au/health/regional-facilities/regional-health-infrastructure-fund>

Technical Questions by email only:

RHIF.Applications@health.vic.gov.au

We look forward to your submissions!

Webinar Questions and Answers

	Question	Response
1	We have had a report completed re one of our sites with regards to the required maintenance. A list of requirements (roof etc) that require remedial work has been given to us. We will have all quotes available- would this be Stream 1?	The agency would need to provide a clear scope of works and include all building works associated with the roof replacement. For example – electrical & mechanical disconnection/reconnections, civil works etc. Supporting documents such as photo's and as built plans in this instance would provide evaluators perspective. As long as the full scale of works is understood and backed up with documentation quotes for a roof replacement would suffice and be considered likely ready for Stream 1 funding.
2	Would a master plan project be considered as a possible planning projected	Master planning is not an eligible project for RHIF 22/23.
3	Could you please outline what is involved in completing a sustainability checklist?	Please refer to Appendix 3 in the RHIF 22-23 Guidelines which outlines some Sustainability FAQs.
4	Is the sustainability check list required for stream 2 as it seems not relevant?	Please refer to Appendix 3 in the RHIF 22-23 Guidelines which outlines some Sustainability FAQs. The checklist includes a section for planning and it is expected this will be completed for Stream 2 submissions.
5	Can the expansion of our current solar system to include fail over upgrade (Batteries and Generator) be applied for under Stream one if quote supplied?	The agency would need to provide a clear scope of works and include all building works associated with the project. For example – electrical & mechanical disconnection/reconnections, civil works etc. Supporting documents such as photo's and as built plans in this instance would provide evaluators perspective. As long as the full scale of works is understood and backed up with documentation quotes for a solar system expansion would suffice and be considered likely ready for Stream 1 funding.
6	The evaluation criteria weighting appears a little disconnected with some of the projects that may be considered / approved – e.g. upgrades to electrical switchboards and system capacity	The RHIF program supports infrastructure upgrades and system capacity/capability projects. Robust, safe, efficient and reliable infrastructure are mission critical assets to provide a quality service.
7	If you have a project with three main components which collectively will cost over \$10K but you only apply for one of these components at around \$5M in this RHIF, do you need to provide a business case?	The RHIF program supports small minor capital works. If the three stages are connected and cannot be separated in terms of functionality and form then a business case is required when the value is over \$10M. This typically would not be funded under the RHIF program. If the components can be separated and deliver defined benefits and outcomes this would be an appropriate submission for RHIF 22/23.
8	Can you provide more clarity of the activities allowable under stream 2?	In most cases Stream 2 funding would compliment construction projects that require advanced documentation to enable the market to quote/tender a construction deliverable.

Webinar Questions and Answers

	Question	Response
9	Can one stream 2 application cover needs for 2 sites owned by a health service, or should they be separate applications?	If there are strong demonstrable and relatable integration and dependencies to achieve the benefits of the project across two sites then one application may be acceptable.
10	Last year there was an residential aged care specific round. Will that occur again does this RHIF round include residential aged care projects?	In the last budget allocation there was no specific fund allocation for the Rural Residential Aged Care fund however you are able to apply via RHIF for Aged Care related projects.
11	Is there an upper limit on new capital infrastructure to replace assets that have reached end of life?	The RHIF program supports small minor capital works, this would be typically <\$10M in value.
12	How to get fleets of Medical equipment like Fleet of pumps, Fleet of Patient Monitoring network with monitors and telemetry, etc.	Medical equipment replacement is eligible to be supported from RHIF 22/23.
13	Is there any chance the application closing date could be extended by a week or two? It is an extremely busy time of year.	No the application process cannot be extended.
14	Is a detailed project management plan required for stream 2 projects? If so is there a preferred template?	Project governance is a key component of successful project delivery. It would be favourable for stream 2 projects with an estimated value of >\$500K upon full delivery to have a project management plan. If a project management plan template is required please contact rhif.applications@health.vic.gov.au
15	Does the funding for the project management cost apply to Stream 2. Is the Project management by the lead consultant - eg the Architect?	Successful applicants for stream 2 funding will be provided with adequate funding to engage a full consultant group to deliver the planning needs.
16	Is there much scope for supporting the development of novel infrastructure for health services through this scheme? Or is it limited to developing/improving existing projects?	Please engage with your Department of Health Regional Representatives to discuss your project scope and deliverables. Refer to page 26 of this presentation for contact names.
17	Can organisations apply, if they have a current RHIF project, that has been delayed due to covid, tradie and supply issues?	All organisations are encouraged to apply to RHIF 22/23. However, past performance will be an important factor in considering the allocation of future funding.
18	Does information technology just include the physical ICT assets or is it able to be used for software?	Historically the physical ICT asset has been supported through RHIF.

Commissioning and System Improvement (CSI) Public Health – Regional Representatives

Region	Representative
Hume	Claire Marshall - claire.marshall@health.vic.gov.au Carmel Hurley - Carmel.Hurley@health.vic.gov.au
Loddon Mallee	Andrew Kallaur - Andrew.Kallaur@health.vic.gov.au Kevin Bowe - Kevin.Bowe@health.vic.gov.au
Barwon South West	Lee Fairley - Lee.Fairley@health.vic.gov.au Kerrie Mansell - Kerrie.Mansell@health.vic.gov.au
Grampians	Judith Perkins - Judith.Perkins@health.vic.gov.au Claire Sharry - Claire.Sharry@health.vic.gov.au
Gippsland	Emmy Fekete - Emmy.Fekete@health.vic.gov.au Renee Giblin - renee.giblin@health.vic.gov.au Sam Chiodo - Sam.Chiodo@health.vic.gov.au

